

Past Research

1. Alpha Testing - 4 teachers and 4 parents

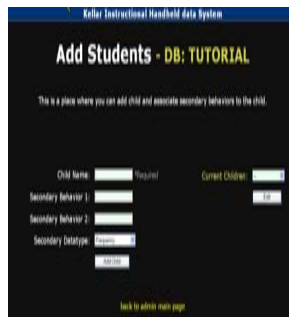
- Quantitative Results

- 75%-easy for making education decisions
- 75%-easy to navigate

2. Beta Testing - 2 administrators, 8 instructors, and 12 students

- Qualitative Results

- Positive Feelings
- Student Interest
- Further Research



Current Research

3. Baseline Technology Perception - 3 teachers

- Qualitative Results
- Positive feelings depend on training and support

Future Research

4. Full Implementation of KIHd System in fall 2006 - 6 teachers, 18 assistants, and 8 students

“[The KIHd System] was just right there and it was very clear.”



College of Education and Human Development
George Mason University
4400 University Drive, MS 1F2
Fairfax, VA 22030

Contact Information
Phone: 703-993-3670

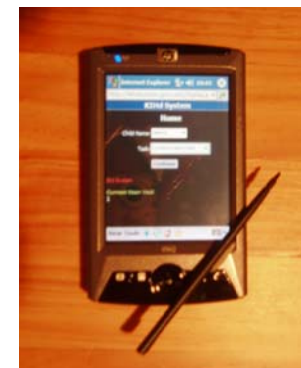
Fax: 703-993-3681

E-mail: mbehrman@gmu.edu
hgraff@gmu.edu
aevmenov@gmu.edu



Kellar Instructional Handheld data System

KIHd System
KIHd System



Improving student performance through assessment using technology

Winner, George Mason University Innovations 2005 Award for Best Use of Technology

The Kellar Instructional Handheld data (KIHD) System

The KIHD System is a simple and comprehensive data collection system appropriate for use in collecting discrete trial data with students of all disabilities.

Requirements:

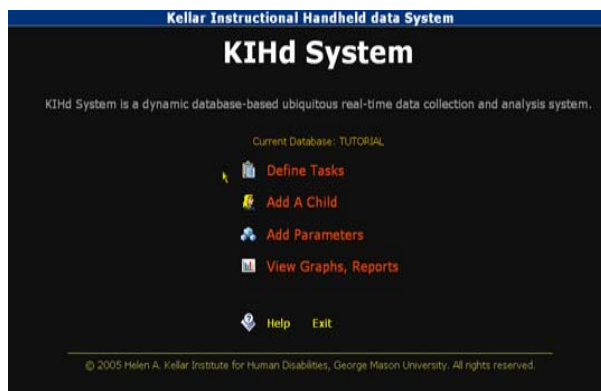
- A browser based, wireless personal digital assistant (PDA) system to collect data
- A personal computer (PC) or server to define and analyze data

Significance:

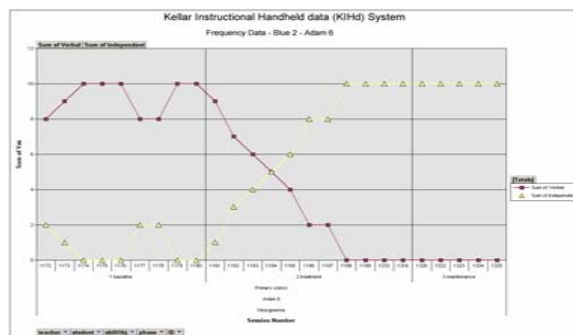
Current methods of data collection and analysis are laborious and time consuming. Typically, large amounts of data are collected but rarely charted. As a result, data is under analyzed and under utilized to make instructional decisions.

Goal:

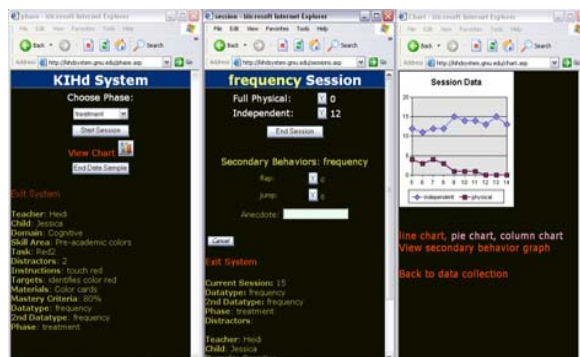
The goal of the KIHD System is for teachers and other educators, including parents to make evidence based, data driven educational decisions.



Administrative Page—Set task parameters



Graph Page—Instant charting of data



PDA Pages—Data collection and small instant output graph

Innovations with the KIHD System

- Password protected
- Instant data graphing for immediate data based decision-making
- Graph options include line, pie, and bar
- Simultaneous collection of primary and secondary behavior data
- Analyze teacher data across students
- Analyze student data across teachers
- Video tutorial and written manual under construction
- Wireless Microsoft access with real-time data collection
- Accessible via PDA and PC

